

# SOLID STATE

From quartz to concrete, the latest options in hard surfacing for countertops, floors and more

BY OLIVIA CHEUNG

## CERAMICS

**1 WORK OUT** Iris Ceramica Group has launched the SapienStone brand of porcelain countertops. The through-body slabs are sold in a variety of textures, colours and patterns that mimic natural stone and cement, and can be used for outdoor kitchen work-tops. [sapienstone.com](http://sapienstone.com)

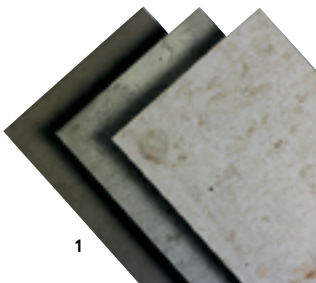
**2 GRAPHIC GRAIN** Combining bold geometric patterns with neutral tones, I Tessuti tiles by Cerim are offered in sizes of 80 by 80 or 80 by 240 centimetres and feature a tactile, bas-relief surface. [cerim.it](http://cerim.it)

**3 MEMORY SPACE** With a weathered look inspired by historic Italian interiors, CEDIT's Storie, designed by Studio Zanellato Bortotto, is sold in 1.2-by-2.4-metre slabs with a six-millimetre thickness. [ceditceramiche.it](http://ceditceramiche.it)

**4 REFINED FEEL** Laminam's one-by-three-metre Seta slabs are just three millimetres thick and come in four monochromatic shades with a visual texture reminiscent of fine fabric softened by age. [laminam.it](http://laminam.it)



## CONCRETE



**1 EASY FIT** Concrete's Concrete Flooring provides the look of raw concrete with economical and lightweight prefinished planks. Offered in 30-by-120-centimetre panels, the tongue-and-groove system has a built-in substrate. [concrete.net](http://concrete.net)

**2 DESIGNER WALL** Concrete LCDA has launched the Panbeton collection of ultra-lightweight, fibre-reinforced concrete wall panels. The line includes designer collaborations such as Slats, a textured pattern by Jean-Marie Maussaud (shown). [concrete-beton.com](http://concrete-beton.com)

**3 MODERN MIXTURE** Villeroy & Boch's Spotlight evokes the look and feel of concrete surfaces in modern architecture with easy-to-install porcelain stoneware tiles. Available in grey, anthracite, white and greige for floor modules, and in white and light grey for walls. [pro.villeroy-boch.com](http://pro.villeroy-boch.com)

**4 GO GREEN** Eco-friendly Extremeconcrete slabs by Merge Design are now available as three-centimetre-thick slabs in over 20 colours. The five-by-nine-foot slabs consist of up to 85 per cent recycled content. [mergedesignco.com](http://mergedesignco.com)